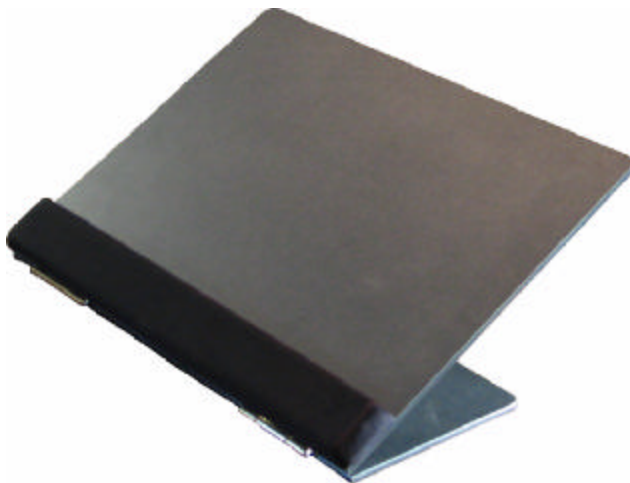


Adjustable Work Surface [EDHCH6013 , EDHCH6015]



Designed to promote good posture, the easily adjustable work surface helps in preventing cervical injury. The work surface is suitable for holding documents or books and makes an excellent writing board.



Features :

- Reduces neck stress and fatigue during reading and/or writing.
- Adjustable angle for improved sitting and reading comfort.
- « Ergosecure » wrist-rest.
- Angle adjustable from 0° to 45°.
- Made of solid laminate.
- Available in two sizes :
 - 20"/50.8cm X 13"/33cm (letter size).
 - 20"/50.8cm x 15"/38.1cm (legal size).

CODE :

- EDHCH6013 (20"/50.8cm X 13"/33cm)
- EDHCH6015 (20"/50.8cm X 15"/38.1cm)

